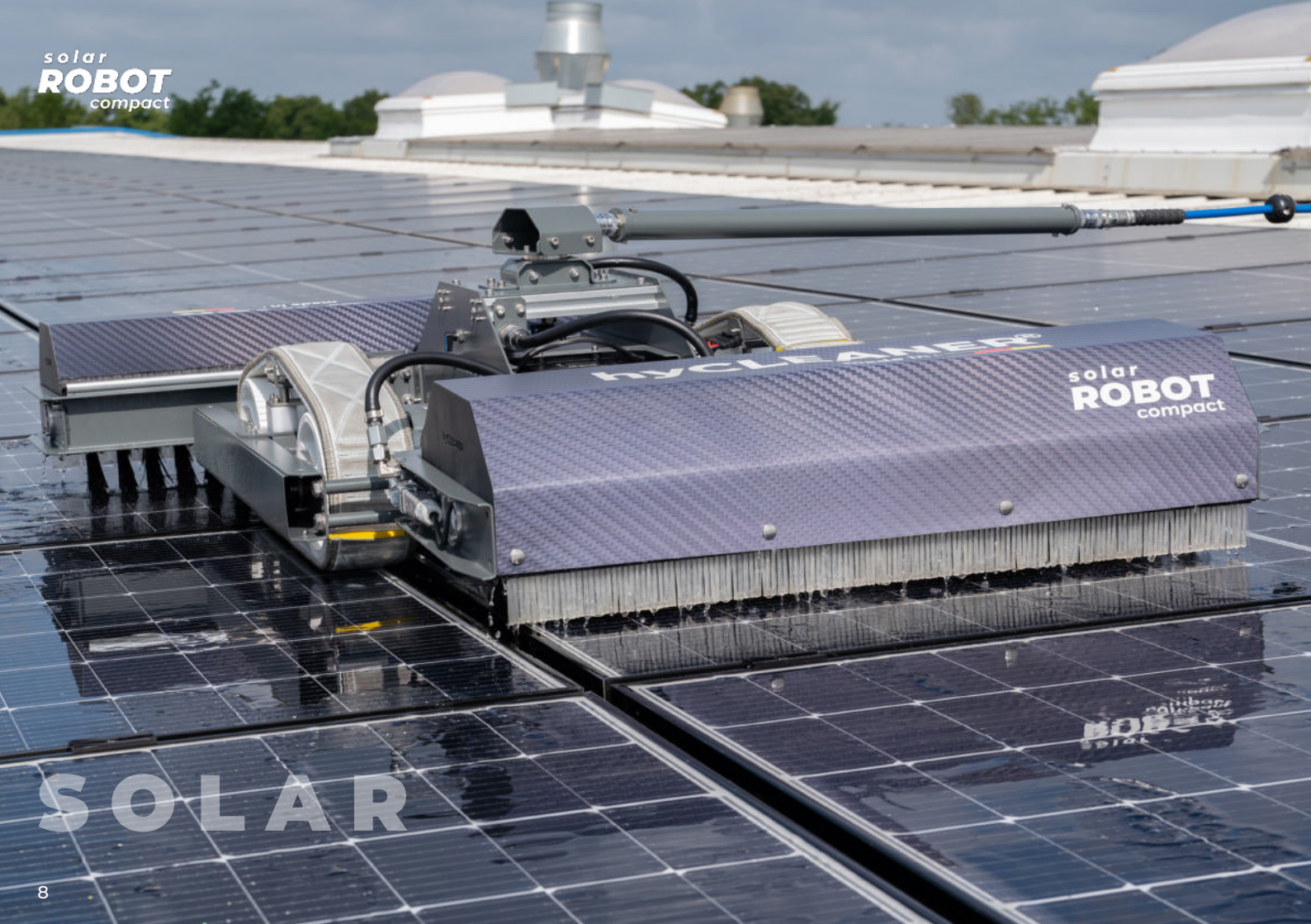


solar  
**ROBOT**  
compact



**SOLAR**

## **solarROBOT compact** for small to medium-sized PV systems of ~50 - 2,000 sqm

Our **small** solar cleaning robot convinces with its compact size and its modularity. The plug- and go system offers many advantages to the user in terms of flexibility and handling, especially on difficult terrain such as roofs. The six light-weight components, each weighing less than 10 kg, are easily placed onto the roof - even by ladder - and assembled by the operator.

With its 800 - 1,100 sqm/h area performance, the robot is particularly suitable for simple, affordable and safe cleaning of small to medium-sized PV systems.

<b>General Data</b>		<b>Brush system 800</b>	
Overall length	± 1,460 mm	Brush length	± 800 mm
Overall width	± 920 mm	Brush length in offset	± 1,100 mm
Overall height	± 425 mm	Brush diameter	± 250 mm
Weight	± 50 kg	Brush rotation	± 300 rpm
Inclination <small>depending on surface condition</small>	max. 20°/ 36%		
Driving speed	± 3 km/h		
<b>Power supply</b>			
Ion battery	36 V		

> CAN BE COMBINED WITH A WIDE RANGE OF ACCESSORIES  
e.g. WITH OUR EDGE DETECTION