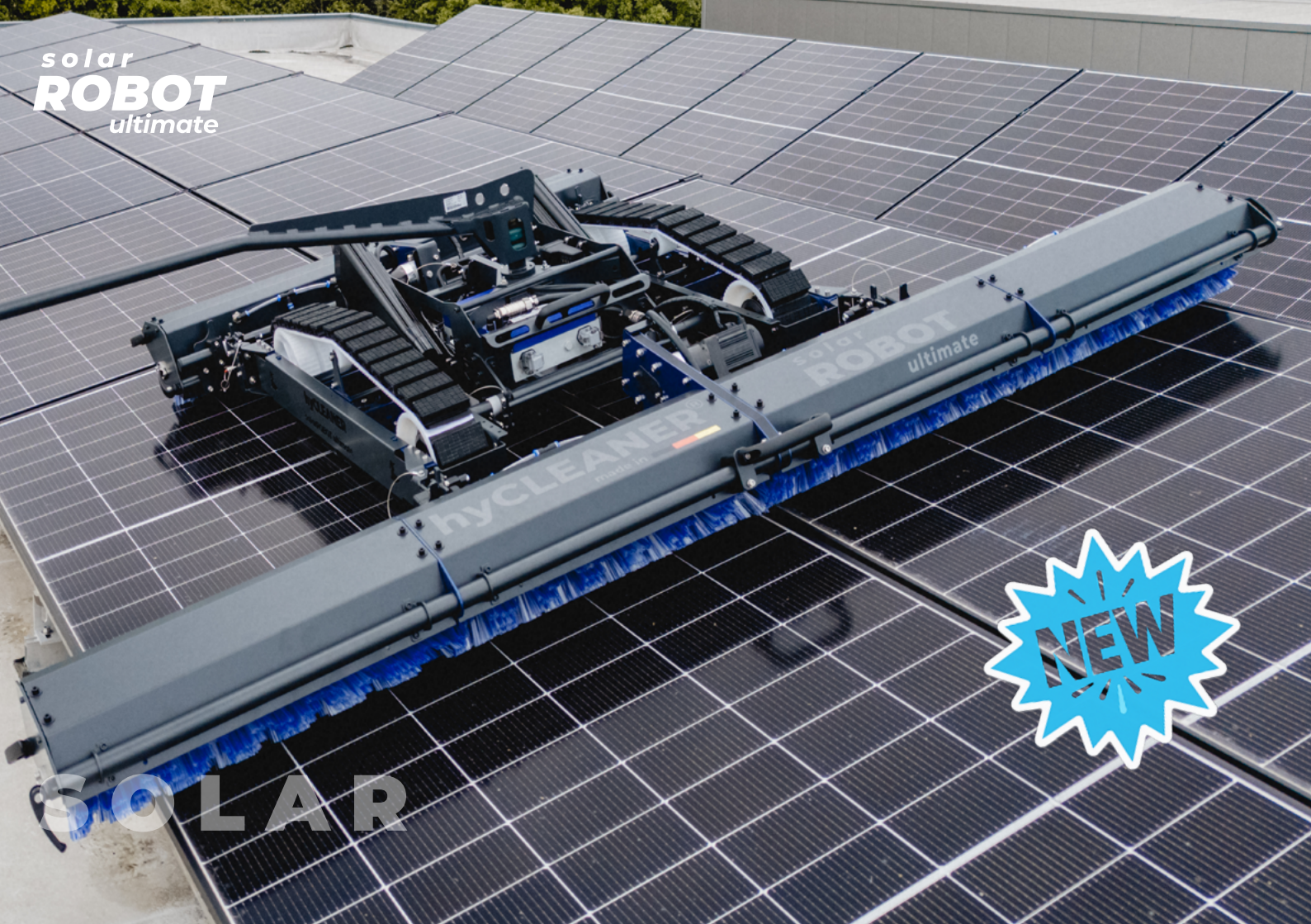


solar  
**ROBOT**  
ultimate



hycleaner  
model 10

solar  
**ROBOT**  
ultimate

**NEW**

**SOLAR**

## solarROBOT ultimate Think big. Clean bigger with ultimate performance.

Open spaces, agri-PV, large-scale rooftop systems—cleaning these areas requires a machine that's up to the task. The solarROBOT ultimate is hyCLEANER's most powerful robot and was designed for professional, continuous use where speed and area coverage matter. With modular brushes that can be quickly and flexibly extended on-site from 1,200 mm to 2,400 mm working width, the ultimate adapts to any installation. Our improved control technology in the chassis ensures precise grip and reliable lane tracking—even on slopes—so that it consistently cleans row by row in Auto Drive mode. After more than 5 hours of continuous operation, the battery is easily swapped out—thanks to the proven battery swap system. The tried-and-true Velcro-based belt change system also ensures the machine is ready for any task. A newly integrated water flow meter gives the operator peace of mind that there is always enough water available and helps tailor cleaning performance perfectly to the job at hand.

General Data		Brush systems 1.200 / 2.400 mm	
Overall length	± 1.890 mm	Brush length	± 1.220 / ± 2.460 mm
Overall width	± 1.270 / ± 2.500 mm	Brush diameter	± 170 mm
Height	± 500 / ± 700 mm with hose guide / with hose reel	Brush rotation	± 250 rpm
Weight	± 75 kg / max. ± 103 kg depending on the configuration		
Inclination	max. 25° / 47% depending on surface condition & driving pad		
Driving speed	± 2,2 km/h		
<b>Power supply</b>		<b>Water supply</b>	
Ion battery	36 V nominal	Water quantity	± 8 - 14 l / min
Battery operating time	> 4 h depending on the application profile		



> **ULTIMATELY EXPANDABLE—WITH ACCESSORIES SUCH AS THE HOSE REEL FOR PERFECT HOSE MANAGEMENT**